



**Sudha Shelter
Home**

ORGANIZATION PROFILE

2016

REGISTERED



Sudha Shelter Home

Rescue • Rehabilitate • Rehome



LOCATION:

Abbanakuppe Road, Ittamadu, Ramanagar Taluk,
Ramanagar District, Bidadi, near Dannamma
Temple, Bengaluru, Karnataka 562109

- Phone: +91 77608 02071/77608 02072
- Mail: sudhashelterhome@gmail.com
- Instagram: [@sudhashelterhome](https://www.instagram.com/sudhashelterhome)
- website: sudhashelterhome.com

SERVING ANIMALS WITH COMPASSION SINCE 15 YEARS



ABOUT THE ORGANIZATION

Sudha Shelter Home is a **Bengaluru-based** animal charitable trust dedicated to rescuing, rehabilitating, sheltering, and rehoming abandoned, injured, and vulnerable animals.

Working for the past 15 years and formally **registered in 2016**, the shelter has grown into a trusted safe haven for animals in need. Through compassionate care, medical support, adoption efforts, and community awareness, we work every day to give every life a second chance.

OUR IMPACT

200+
Dogs in Care

450+
Cats in Care

Multi-Species Rescue
Guinea pigs, Turtles, Ducks, Birds, & more

Rescue • Rehabilitation • Sheltering • Awareness

VISION

To create a safer and more compassionate world where every animal is protected, valued, and free from neglect, abandonment, or preventable suffering.

True to our name, we envision a shelter that feels like home, where rescued animals are cared for with comfort, dignity, warm beds, open spaces, and a loving environment where they truly belong.

MISSION

Our mission is to rescue, treat, rehabilitate, and rehome abandoned, injured, and vulnerable animals through compassionate care and responsible practices.

We provide lifelong, loving shelter to animals who cannot return to homes, ensuring they live with dignity, comfort, and emotional security. We also work to spread awareness, encourage responsible pet care, and inspire a future where shelters set higher standards of humane animal welfare.



FOUNDERS & LEADERSHIP

Dr. Sudha Venkatesh Desai is the founder of Sudha Shelter Home and the driving force behind its mission of compassion and animal welfare. What began as a simple act of kindness nearly 15 years ago gradually evolved into a dedicated rescue, rehabilitation, and lifelong care shelter for vulnerable animals.

Growing up surrounded by domestic animals and caring for them from an early age, she developed a deep bond with animals that later became the foundation of her life's purpose. With years of hands-on experience in rescue care, shelter management, medical support coordination, and adoption efforts, she has created a safe haven for hundreds of abandoned, injured, and neglected animals.

Her journey reflects unwavering commitment, resilience, and the belief that every life deserves dignity, protection, and a second chance.

FOUNDER

**Dr. Sudha
Venkatesh
Desai**



RECOGNITION

- Honorary Doctorate(Honaris Causa) in Social Work – Animal Rescue
- Member Organization Recognition – FIAPO
- Proud Member – PETA
- Media Features & Public Recognition
- Years of Community Service in Animal Welfare
- Kittur rani chennamma Award 2024
- Varshada mahile sadike award by Raj TV 2023

CO-FOUNDER & OPERATIONS LEAD

Megha Bharani Desai plays a pivotal role in the day-to-day operations and strategic development of Sudha Shelter Home, working closely alongside the founder to ensure smooth rescue, rehabilitation, and shelter activities.

She oversees animal care, manages staff responsibilities, coordinates medical support, and handles sensitive rescue cases with compassion and efficiency.

Megha also leads outreach initiatives, builds relationships with organizations and CSR partners, and manages the shelter's digital and technological needs.

With a background in fashion design, Megha brings a strong sense of visual communication and creative direction to the shelter, contributing to its outreach, branding, and awareness initiatives.

Her journey in animal welfare began at the age of 14 with her first rescue, a defining moment that helped shape the shelter's early foundation.

Today, she remains an integral force behind the shelter's growth, vision, and long-term impact.

CO-FOUNDER

**Megha
Bharani
Desai**



A SHARED MISSION

TWO GENERATIONS. ONE PURPOSE. A LIFETIME OF COMPASSION.

What began as one woman's quiet act of compassion has grown into a powerful mother-daughter mission dedicated to animal welfare. Driven by deep commitment, Sudha Venkatesh Desai made personal sacrifices to create a permanent sanctuary for animals with nowhere else to go, leading to the development of two thoughtfully built shelters that now provide safety and care for hundreds of lives.

Her daughter, Megha Bharani Desai, has stood beside her throughout this journey, bringing fresh perspective, operational strength, and hands-on dedication to rescue and care. Together, they combine experience, compassion, and vision to lead Sudha Shelter Home with purpose.

Their shared mission is more than running a shelter. It is building a lasting legacy of kindness, resilience, and hope for animals in need.



**THIS IS MORE THAN A SHELTER.
IT IS A LEGACY OF COMPASSION.**

WHAT WE DO



RESCUE OPERATIONS

We respond to emergency calls and actively rescue abandoned, injured, and at-risk animals, providing immediate care and safe transport to the shelter.



MEDICAL CARE & REHABILITATION

Animals receive timely veterinary care, treatment, and rehabilitation, ensuring recovery from injuries, illness, and trauma.



SHELTER & DAILY CARE

We provide a safe, open, and hygienic environment with proper nutrition, regular monitoring, and compassionate daily care for all animals.



ADOPTION & PERMANENT CARE

While supporting suitable adoptions when possible, we primarily provide lifelong shelter and permanent care for animals whose families are no longer able to care for them, ensuring safety, comfort, and compassion.



STERILIZATION (SPAY/NEUTER)

We promote and conduct sterilization efforts to control stray populations and prevent unnecessary suffering.



AWARENESS & EDUCATION

We engage with communities to spread awareness about animal welfare, responsible care, and coexistence.

HOW WE OPERATE

OPEN SHELTER MODEL

Animals are cared for in a safe and spacious environment with free movement, reducing stress and encouraging natural behavior.

HYGIENE PRACTICES

Regular cleaning, sanitization, waste management, and routine maintenance are carried out to maintain a healthy shelter environment.

VETERINARY SUPPORT

Animals receive timely medical attention, treatment, vaccinations, and ongoing monitoring under veterinary guidance.

ISOLATION & RECOVERY PROTOCOLS

Sick, injured, or newly admitted animals are separated when required to ensure safe recovery and prevent the spread of infection.

FEEDING & NUTRITION

Animals are provided species-appropriate nutrition, clean drinking water, and scheduled feeding routines to support health and recovery.





IMPACT & REACH

RESCUE IMPACT

- **2,500+** Animals Helped through rescue, treatment, and rehabilitation over the years
- Emergency Rescue Response across Bengaluru and surrounding areas

PERMANENT CARE & REHOMING

- Hundreds of Animals provided **lifelong shelter** and **permanent care**
- Successful Rehoming & Responsible Placement whenever suitable homes are available

STERILIZATION & WELFARE

- All animals in our shelter are fully vaccinated and sterilized before integration, ensuring a safe and healthy environment while preventing disease and overpopulation. We also support around 100 nearby stray dogs with regular feeding, vaccination, and sterilization, extending care beyond our shelter walls.

COMMUNITY REACH

- 15+ Years of Service in animal welfare, officially registered in 2016.
- Growing awareness through digital outreach, public support, and compassionate partnerships.

CURRENTLY IN CARE

- **200+** Dogs
- **450+** Cats
- Other Species

CSR COLLABORATION OPPORTUNITIES

PARTNER WITH US TO CREATE REAL IMPACT

Sudha Shelter Home welcomes meaningful CSR partnerships that directly improve the lives of rescued and vulnerable animals. Organizations can support through the following initiatives:

1. INFRASTRUCTURE SUPPORT

- Contribute towards shelter expansion, kennel development, flooring, roofing, water systems, storage areas, and improved living spaces for animals.

2. MEDICAL SPONSORSHIPS

- Support surgeries, emergency treatments, vaccinations, medicines, rehabilitation care, and regular veterinary needs.

3. FOOD SPONSORSHIPS

- Sponsor daily nutrition including dog food, cat food, supplements, grains, and feeding support for hundreds of animals in care.

4. AWARENESS PROGRAMS

- Collaborate on campaigns promoting animal welfare, responsible pet care, sterilization awareness, and compassionate communities.

5. EMPLOYEE ENGAGEMENT

- Encourage team volunteering through shelter visits, feeding drives, plantation activities, donation campaigns, skill-based support, and community service days.

6. CUSTOM CSR PROJECTS

- We also welcome customized partnerships aligned with your company's CSR goals and sustainability vision.

TOGETHER, WE CAN SAVE MORE LIVES.



CHALLENGES & NEEDS

BRIDGING THE GAP BETWEEN COMPASSION & CAPACITY

While Sudha Shelter Home continues to expand its impact, several ongoing challenges limit the scale at which more animals can be helped.

FUNDING GAPS

Sustaining daily operations, medical treatments, food supplies, and infrastructure requires consistent financial support. Irregular funding often impacts the ability to respond to emergencies and expand services.

SPACE CONSTRAINTS

With a growing number of rescues and animals in permanent care, shelter space is under constant pressure, limiting intake capacity and expansion opportunities.

COMMUNITY CHALLENGES

Rescue efforts are sometimes hindered by lack of awareness, resistance, or delayed intervention, making it difficult to act quickly in critical situations.

WHY SUPPORT MATTERS

Every partnership directly helps us rescue more animals, improve living conditions, and provide long-term care to those who need it most.



FINANCIAL TRANSPARENCY & COMPLIANCE

BUILDING TRUST THROUGH ACCOUNTABILITY

Sudha Shelter Home is committed to maintaining transparency, ethical governance, and responsible utilization of all funds received for animal welfare activities.

REGISTRATION DETAILS

Registered Non-Profit Organization

Established in 2011 | Formally Registered in 2016

12AA & 80G TAX BENEFIT

Donations made to Sudha Shelter Home are eligible for applicable tax benefits under Section 80G of the Income Tax Act.

UTILIZATION OF FUNDS

All contributions are directed toward priority welfare needs, including:

- Animal food & nutrition
- Medical treatment & surgeries
- Vaccinations & sterilization programs
- Shelter maintenance & infrastructure
- Rescue transportation & emergency response
- Staff support for daily animal care

REPORTING & ACCOUNTABILITY

We maintain proper financial records and can share supporting documents, receipts, and utilization summaries for CSR and donor partnerships as applicable.

COMMITTED TO RESPONSIBLE IMPACT



MEDIA & SOCIAL PROOF

1. [Kalamadyam Shelter Documentary](#)
2. [Deccan Herald article](#)
3. [Sudha Shelter Home - Shelter tour](#)
4. [Instagram link](#)
5. [Youtube link](#)
6. [Website: sudhashelterhome.com](#)

Sudha Shelter Home's work has been acknowledged through media coverage, digital platforms, and growing public support, reflecting the impact created in animal welfare.

ARTICLES & FEATURES

Featured in newspapers, digital publications, and public interest stories highlighting rescue efforts, shelter operations, and compassionate leadership.

DOCUMENTARY & VIDEO FEATURES

Sudha Shelter Home has been showcased through documentary content, social videos, and visual storytelling that highlight real rescue journeys and on-ground impact.

Animal kingdom
32 cats, 3 dogs, a Guinea pig live under one roof

G Marjusaianath

BENGALURU: There are many cat lovers in the city, but few can match Sudha Venkatesh's passion for the felines.

At her home in Basavanagudi 3rd Stage near Kathriguppe Water Tank, there is hardly a corner where you won't spot a furry creature lounging freely or perched royally - be it the refrigerator, almshouse, bed, sofa, atop the microwave oven, in the shoe stand or the dining table. Visitors are forced to



Sudha Venkatesh in Kathriguppe spends Rs 30,000 a month on her pets.

...more will soon join the ex- stray dogs and four stray cats.

...bunt, who knew we had three pet cats, informed us about a stray cat in trouble. It was badly mangled by some stray dogs. We brought it home and gave it medical attention. It recovered and since then, our journey of rescuing cats began and our cat family swelled.

Today, she has different breeds of cats - Persian, Semi Persian, Kashmiri, Turkish Van, a variety of Indian cats like the short hair and long hair. "We did not buy any of these cats. They were either given to us by their owners or we rescued them," says Sudha.

...spends a whopping Rs 30,000 a month, with food accounting for the largest component. Being a strict vegetarian, she buys branded cat food, which is very expensive. The cats lap up 10 rns of the food everyday, each one eating Rs 50.

"It is a hefty sum for a middle class family like ours but we are managing it. My husband, daughter and son contribute. We do receive donations, especially from those adopting these animals or those willing to leave them with us," says Sudha, but adds that it is manageable.

RESCUE STORY

EMERGENCY MOTHER & NEWBORN RESCUE



A distressed mother cat was found struggling to deliver her kittens in unsafe and confined conditions. The situation was critical, with both the mother and newborns at risk.

Our team responded immediately, providing careful assistance, a safe space, and post-delivery support. With timely intervention and compassionate care, the mother successfully delivered and both she and her kittens were stabilized.

They were then monitored, nourished, and given the protection they needed during the most vulnerable stage of life.

This rescue is a reminder that timely action can save not just one life, but an entire family.

RESCUE STORY

ROAD ACCIDENT SURVIVOR RECOVERY



A stray dog was found severely injured after a road accident on the Hyderabad highway, unable to walk and in intense pain. Immediate rescue action was taken, and the dog was rushed for emergency veterinary treatment.

Medical examination revealed serious fractures that required surgery and specialized orthopedic care. With timely intervention, surgery was successfully performed, followed by pain management, wound care, and a long rehabilitation process.

During recovery, the dog was provided shelter, nutrition, rest, and constant monitoring to regain strength and mobility. Step by step, the journey moved from trauma to healing.

This rescue reflects how urgent medical care and continued rehabilitation can give accident victims a second chance at life.

RESCUE STORY

PUPPY SURVIVOR OF SEVERE BITE INJURY



A young street puppy was found critically injured after a violent dog attack in Hyderabad, suffering deep wounds and severe trauma. The puppy was in immense pain and required urgent lifesaving intervention.

Our rescue team acted immediately and rushed the puppy for emergency veterinary care. After medical evaluation, surgery was performed to treat the injuries, control infection, and stabilize the affected limb.

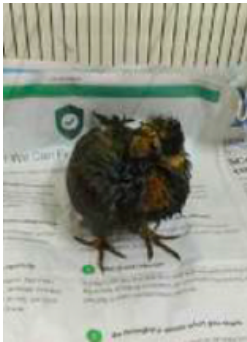
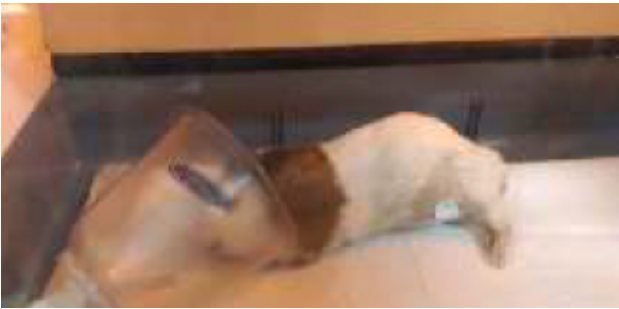
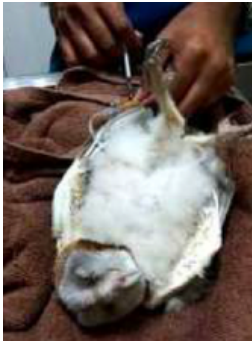
The recovery journey required continuous wound dressing, medication, nutrition support, and close monitoring. With patience, treatment, and compassionate care, the puppy gradually regained strength and confidence.

Today, this rescue stands as a symbol of resilience and the power of timely medical intervention.

Even the most injured lives can heal when given a chance.

RESCUE STORY

COMPASSION BEYOND SPECIES



Our work extends far beyond dogs and cats. Over the years, we have rescued and treated injured pigeons, kite birds, crows, owls, rabbits, snakes, and many other vulnerable animals in distress.

From birds with broken wings and severe wounds, to rabbits needing urgent medical attention, and reptiles requiring safe relocation, every rescue is handled with care, patience, and professional guidance.

Each species has unique needs, and our team ensures the right support, treatment, and rehabilitation before release or continued care when necessary.

These rescues reflect a simple belief:

**every life matters, no matter how small, silent,
or misunderstood.**



Sudha Shelter Home stands as a promise of compassion, dignity, and second chances for every animal in need. With dedicated leadership, transparent operations, and a commitment to lifelong care, we continue to create lasting impact every day. Together with compassionate individuals, communities, and CSR partners, we can build a safer future where no animal is left behind.

